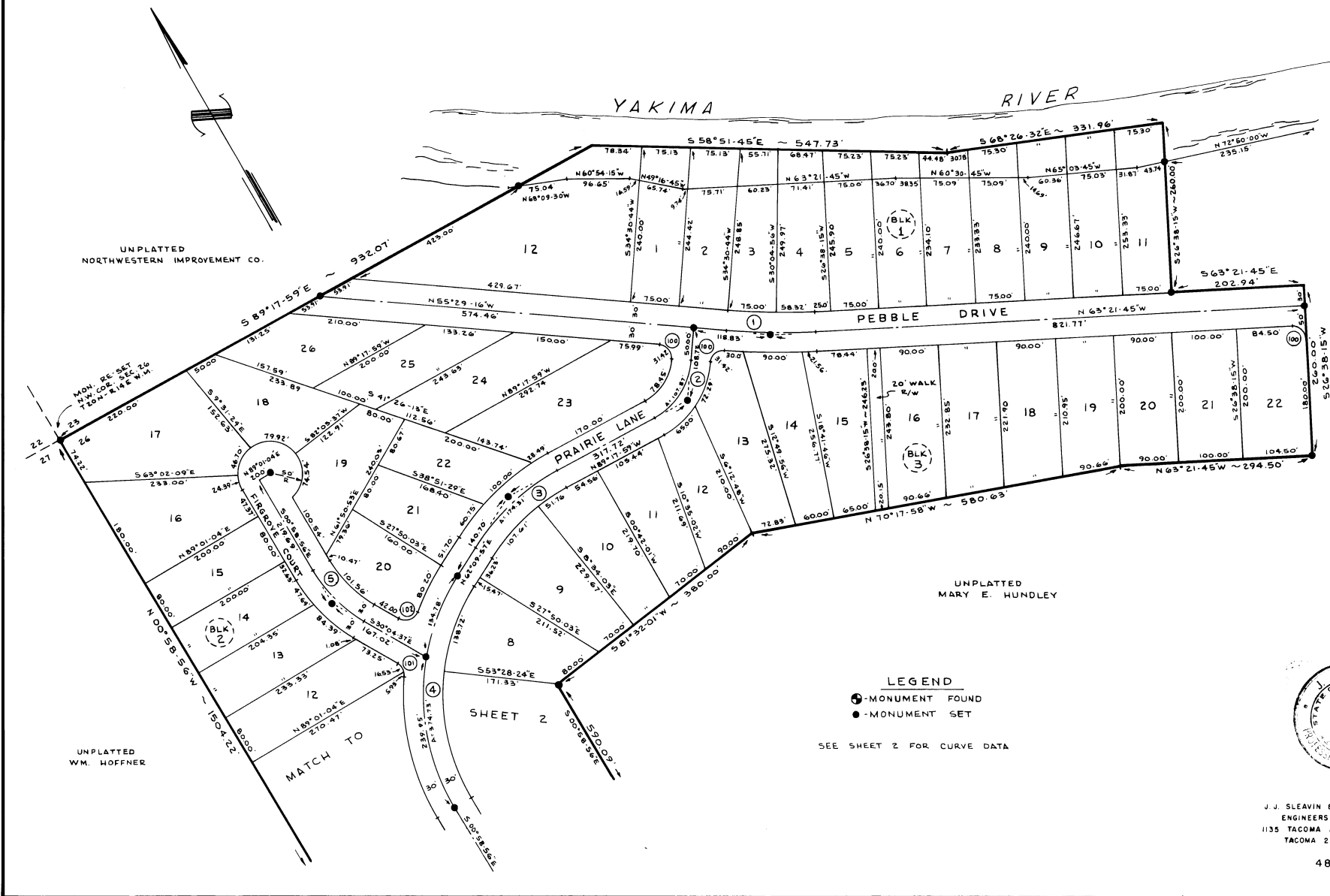


PINE VALLEY RANCH

A PORTION OF SECTION 26 - T 20 N - R 14 E, W.M.
KITTITAS COUNTY, WASHINGTON

SCALE: 1" = 100'

Receiving Number 302561



LEGEND
 ● - MONUMENT FOUND
 ● - MONUMENT SET
 SEE SHEET 2 FOR CURVE DATA

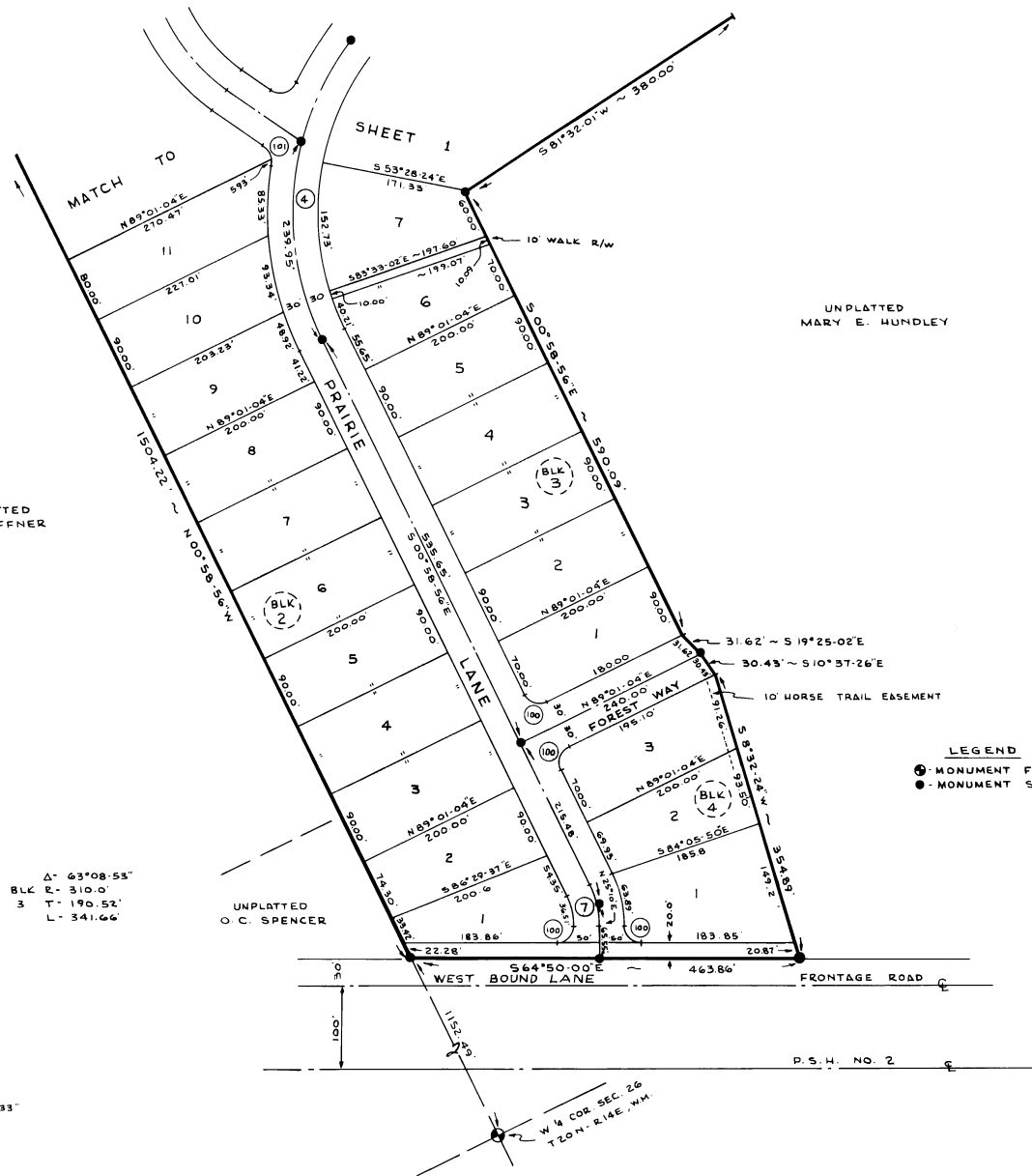
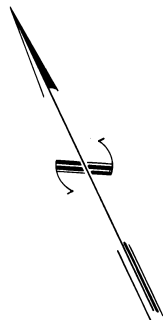


J. J. SLEAVIN & ASSOCIATES
 ENGINEERS - SURVEYORS
 1135 TACOMA AVE. SO. FU3-1705
 TACOMA 2, WASH.

PINE VALLEY RANCH

Receiving Number 302561

A PORTION OF SECTION 26 - T20N - R14E, W. M.
KITTITAS COUNTY, WASHINGTON
SCALE: 1"=100'



UNPLATTED
WM. HOFFNER

UNPLATTED
MARY E. HUNDLEY

UNPLATTED
O. C. SPENCER

LEGEND
 ○ MONUMENT FOUND
 ● MONUMENT SET

CURVE DATA

① BLK 1 R- 970.00' T- 66.76' L- 133.32'	② BLK 2 R- 80.0' T- 42.71' L- 78.45'	③ BLK 2 R- 380.0' T- 96.63' L- 189.25'	④ BLK 2 R- 370.0' T- 40.26' L- 80.20'	⑤ BLK 2 R- 200.0' T- 51.90' L- 101.56'	⑦ BLK 2 R- 80.0' T- 18.58' L- 36.51'	⑧ BLK 1 R- 1000.0' T- 68.83' L- 137.44'	⑨ BLK 3 R- 1030.0' T- 70.89' L- 141.56'	⑩ BLK 2 R- 110.00' T- 58.72' L- 107.87'	⑪ BLK 3 R- 140.0' T- 74.73' L- 137.29'	⑫ BLK 2 R- 350.0' T- 89.00' L- 174.31'	⑬ BLK 3 R- 370.0' T- 117.52' L- 227.58'	⑭ BLK 2 R- 230.0' T- 59.69' L- 116.79'	⑮ BLK 3 R- 340.0' T- 208.96' L- 374.75'	⑯ BLK 4 R- 200.0' T- 67.47' L- 132.03'	⑰ BLK 4 R- 230.0' T- 25.55' L- 50.20'	⑱ BLK 4 R- 140.0' T- 32.51' L- 63.89'	⑲ BLK 2 R- 20.0' T- 20.0' L- 31.42'	⑳ BLK 2 R- 20.0' T- 12.58' L- 22.46'	㉑ BLK 2 R- 20.0' T- 23.91' L- 34.97'
---	--	--	---	--	--	---	---	---	--	--	---	--	---	--	---	---	---	--	--



J.J. SLEAVIN & ASSOCIATES
ENGINEERS - SURVEYORS
1135 TACOMA AVE. SO. PU 3-1705
TACOMA 2, W.N.